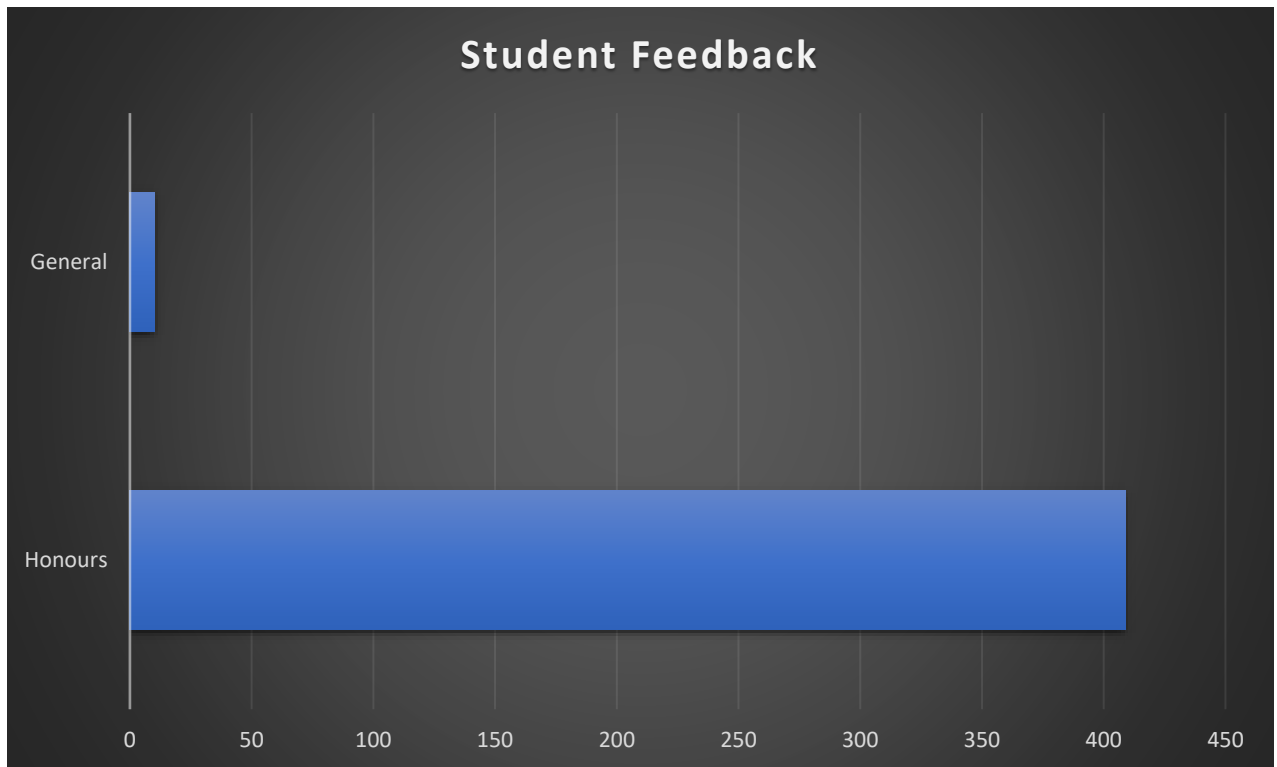
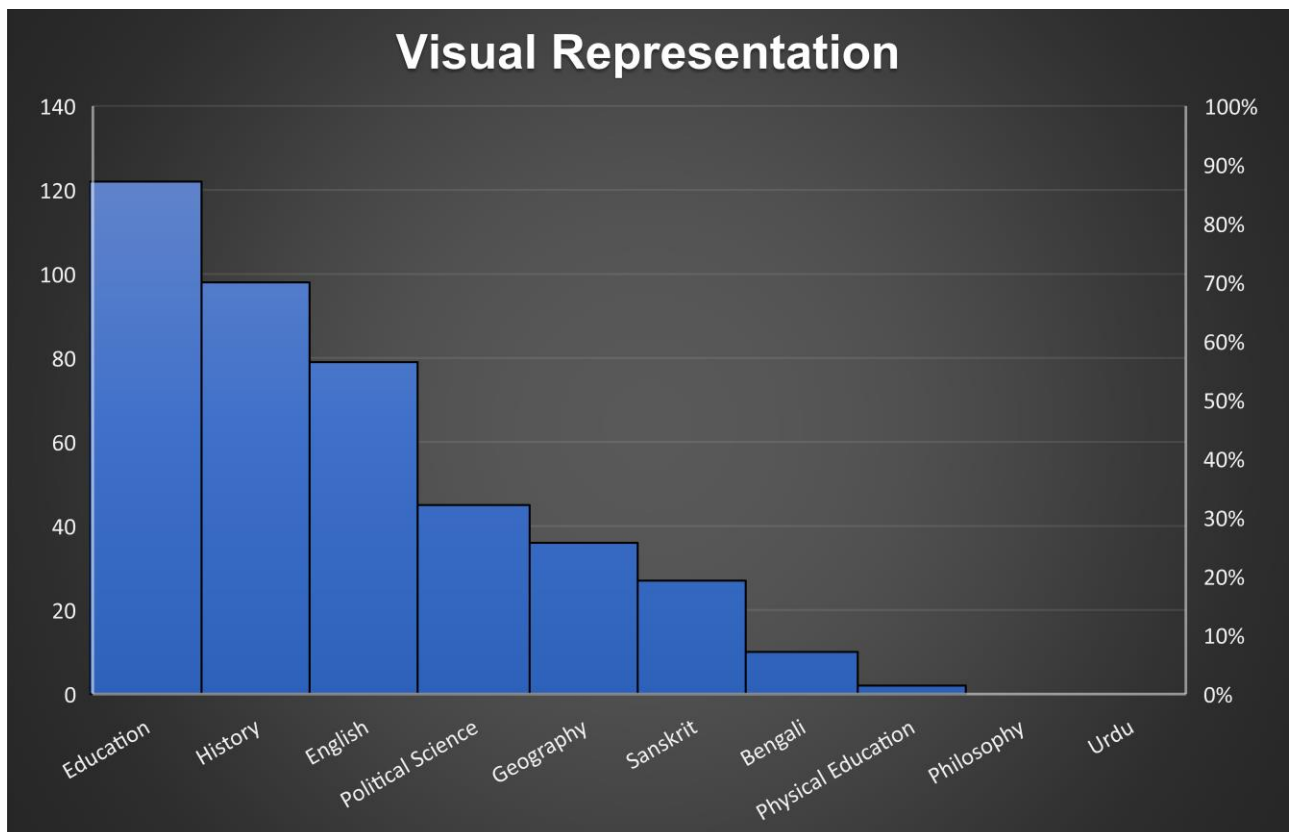


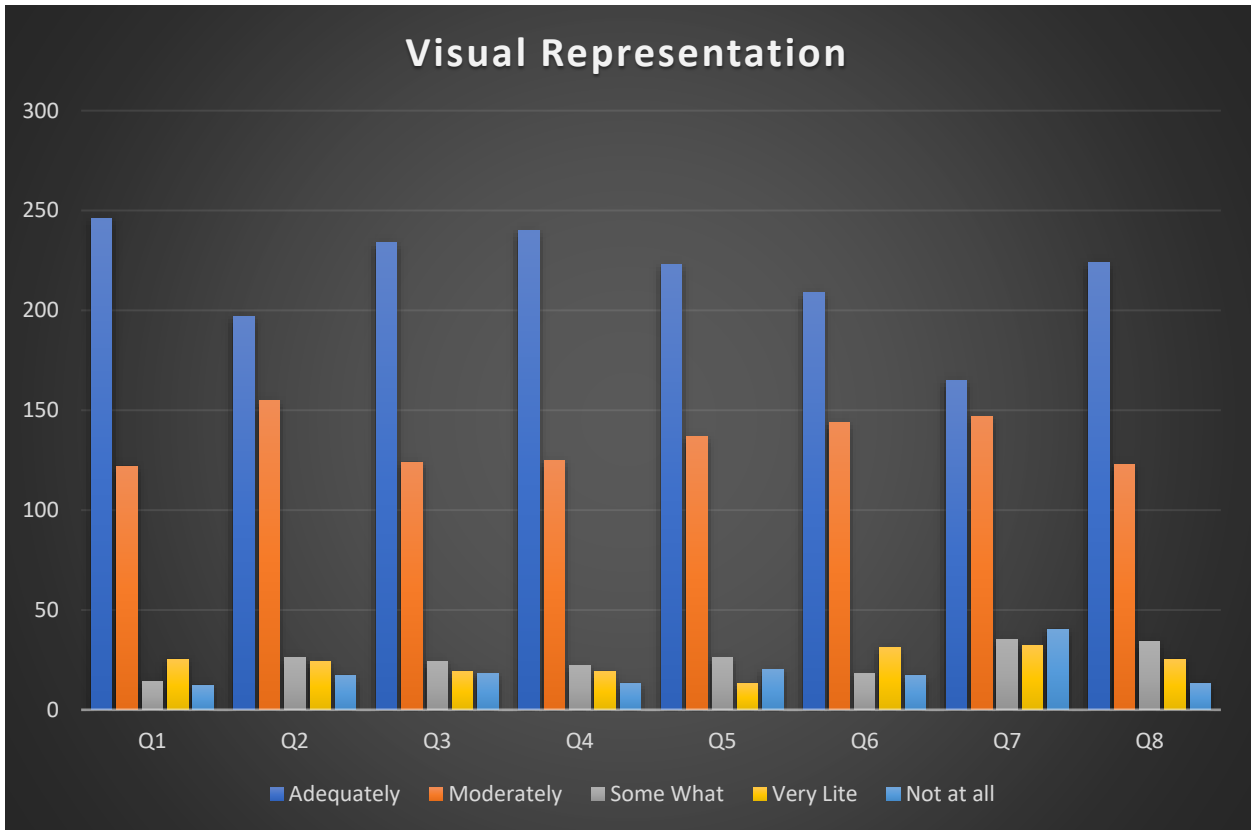
# Analysis of Students' Feedback: 2022-2023



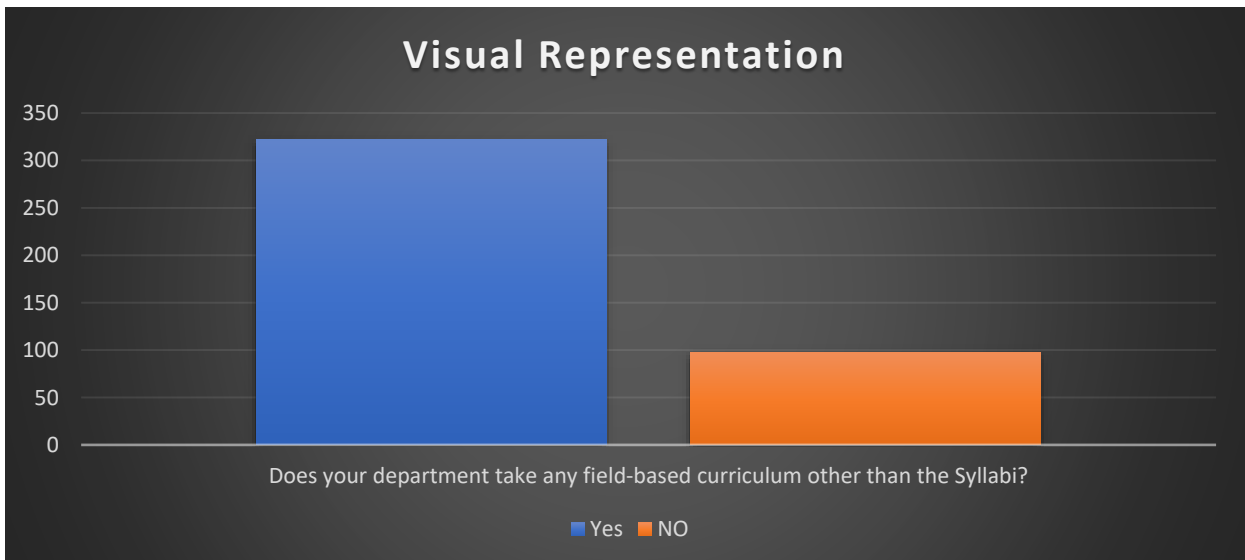
Department and Program wise percentage of respondent:



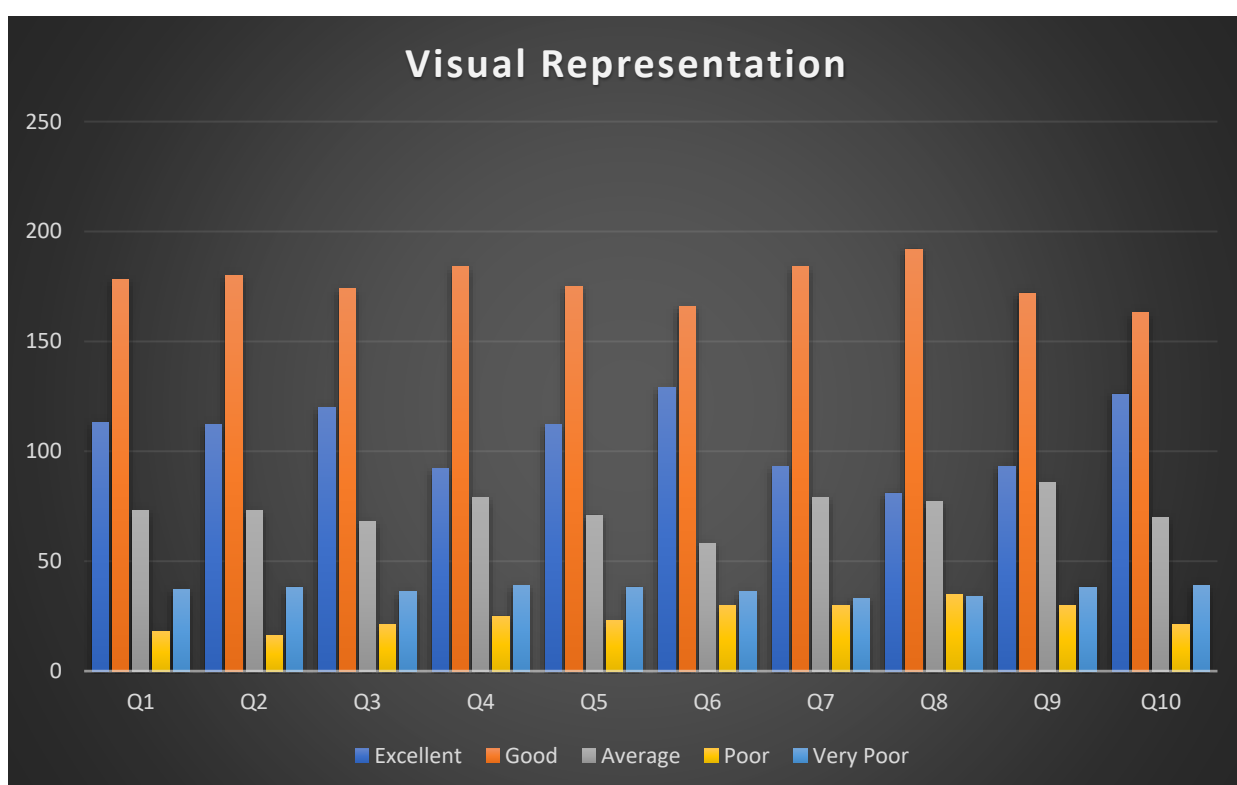
Sl No.	Responses	Adequately	Moderately	Some What	Very Lite	Not at all
	Questions					
Q1	Do you avail adequate study materials from your teacher/ Department/ College?	246	122	14	25	12
Q2	Is the curriculum made interesting to you through PPT presentations and use of other electronic devices by the teacher?	197	155	26	24	17
Q3	Is the curriculum made interesting to you by making you participate in the class through seminars and presentations?	234	124	24	19	18
Q4	Are the classes conducted regularly in order to cover the syllabus?	240	125	22	19	13
Q5	Are the remedial classes conducted in order to cover the syllabus or to clear the confusion?	223	137	26	13	20
Q6	Are the class test conducted regularly in order to assessment?	209	144	18	31	17
Q7	Are the Quiz competition conducted by department or College in regular manner?	165	147	35	32	40
Q8	Are the seminar conducted by department or College in regular manner to enrich your knowledge as well as skill?	224	123	34	25	13



Questions	Responses	
	Yes	NO
Does your department take any field-based curriculum other than the Syllabi?	322	97



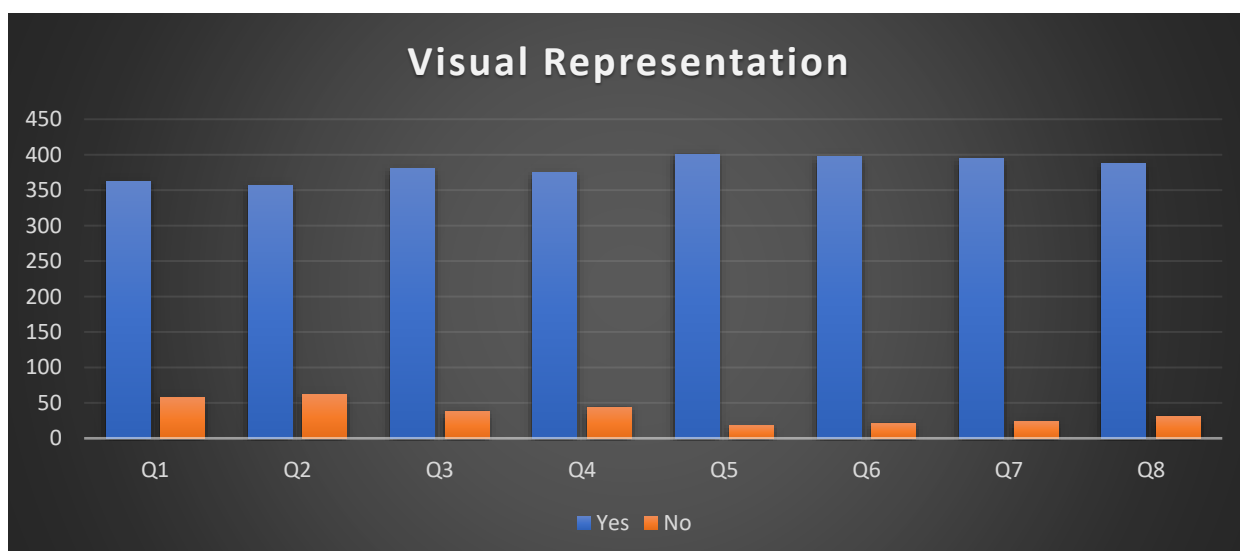
Questions	Responses	Excellent	Good	Average	Poor	Very Poor
Q1	Teacher's ability to bring conceptual clarity and thinking	113	178	73	18	37
Q2	Teacher's ability to provide motivations	112	180	73	16	38
Q3	Teacher's communication skill	120	174	68	21	36
Q4	Teacher's regularity and punctuality	92	184	79	25	39
Q5	Teacher's ability for explaining areas of confusion	112	175	71	23	38
Q6	Teacher's ability to explain theory with real example	129	166	58	30	36
Q7	Give your opinion Teacher's guidance after class hours	93	184	79	30	33
Q8	Give your opinion Completion and coverage of syllabus	81	192	77	35	34
Q9	Teachers' encouragement to participate in extracurricular and co-curricular activities	93	172	86	30	38
Q10	The overall quality of teaching learning process in your college	126	163	70	21	39



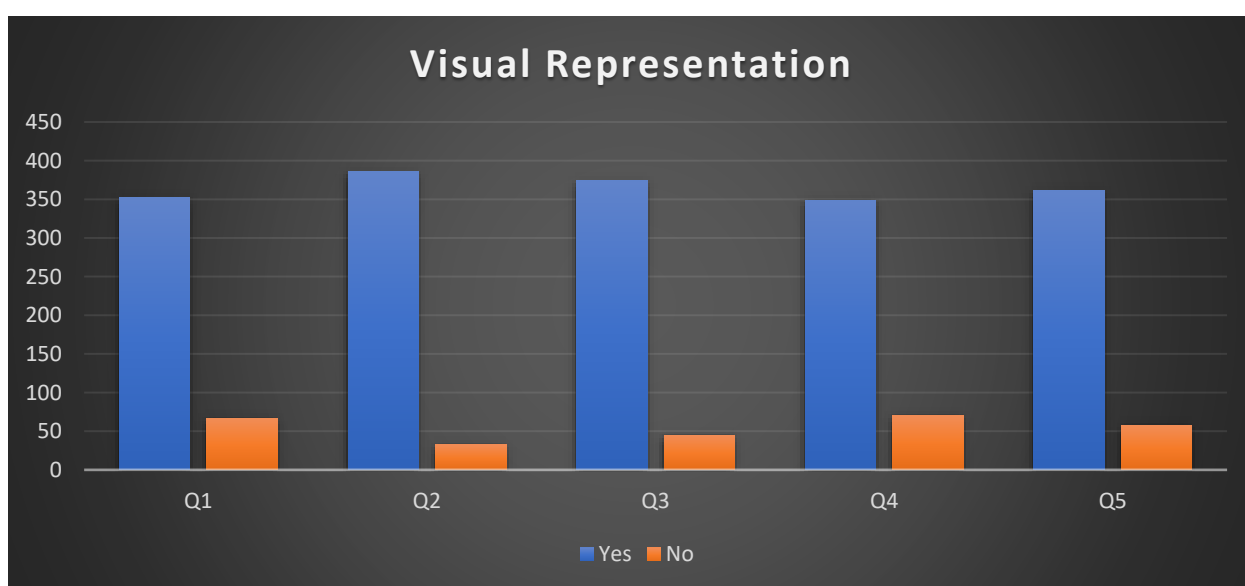
Questions	Responses		
	Regular	Occasionally	Never
How often do you visit library?	109	273	37



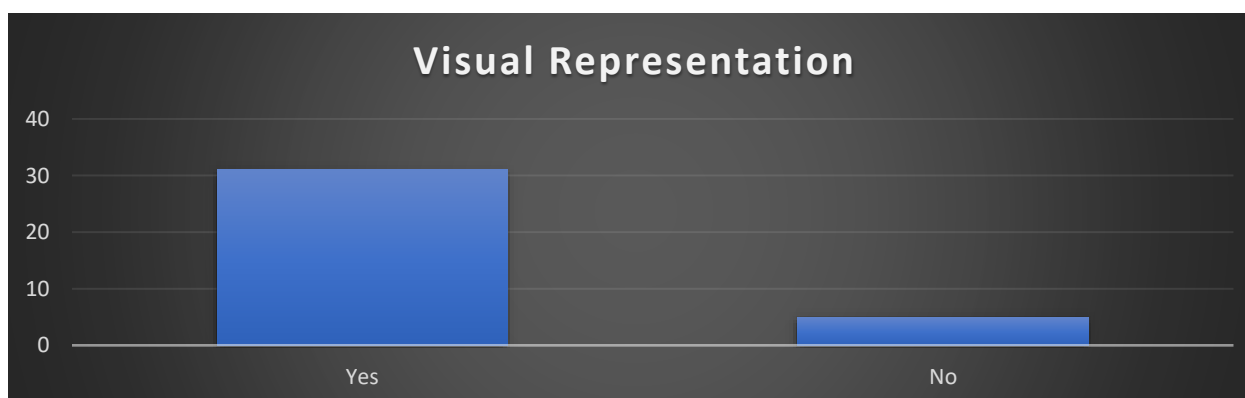
Sl.No.	Questions Related to Library and Administration	Yes	No
Q1	Are the required number of books in your Subject available in the library	362	57
Q2	Are you satisfied with the distribution process of books in the library	357	62
Q3	Are you satisfied with the available Reading space in the library	381	38
Q4	Are the Library Staff co-operative and helpful	375	44
Q5	Is the administrative office helpful in administrative matters	401	18
Q6	Do you receive the Mark sheet/admit/forms from office in time	398	21
Q7	Are the office Staff co-operative and helpful	395	24
Q8	Do you get useful information from the office staff regarding examinations, Results issue (Review, RTI, SCRUTINY etc)	388	31



Sl. No.	Questions	Responses	
		Yes	No
Q1	Are the toilets cleaned properly?	352	67
Q2	Is the Drinking Water Facilities available in your college campus?	386	33
Q3	Availability of first aid facility in the campus in case of emergency?	374	45
Q4	Are you satisfied with the common room facility available in your college?	349	70
Q5	Have you received any Scholarship from the college?	361	58



Questions	Responses	
	Yes	No
Are the Lab. Equipment's in proper working conditions (only for Geography students)?	31	5



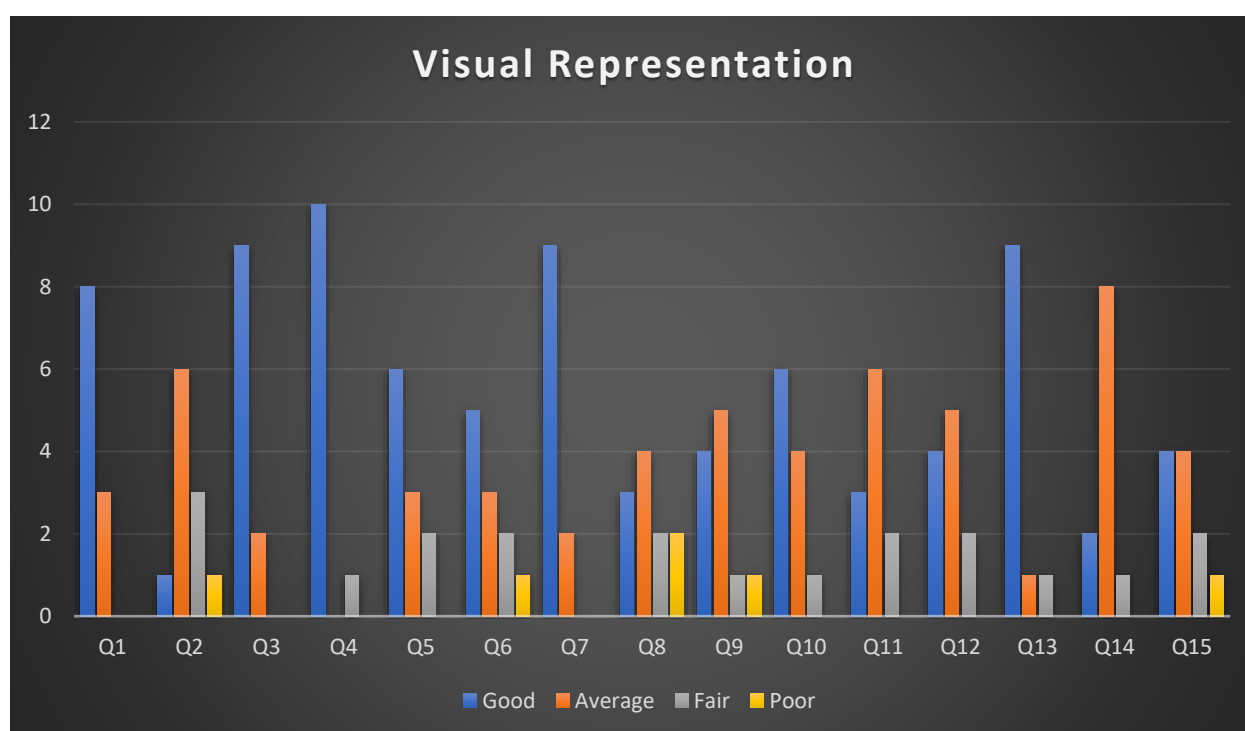
## Analysis of Feedback from Non-Teaching Staff: 2022-2023

### Response received from:

- Permanent staffs: 03
- Contractual staffs: 08

### Facilities and Initiatives to support the staffs:

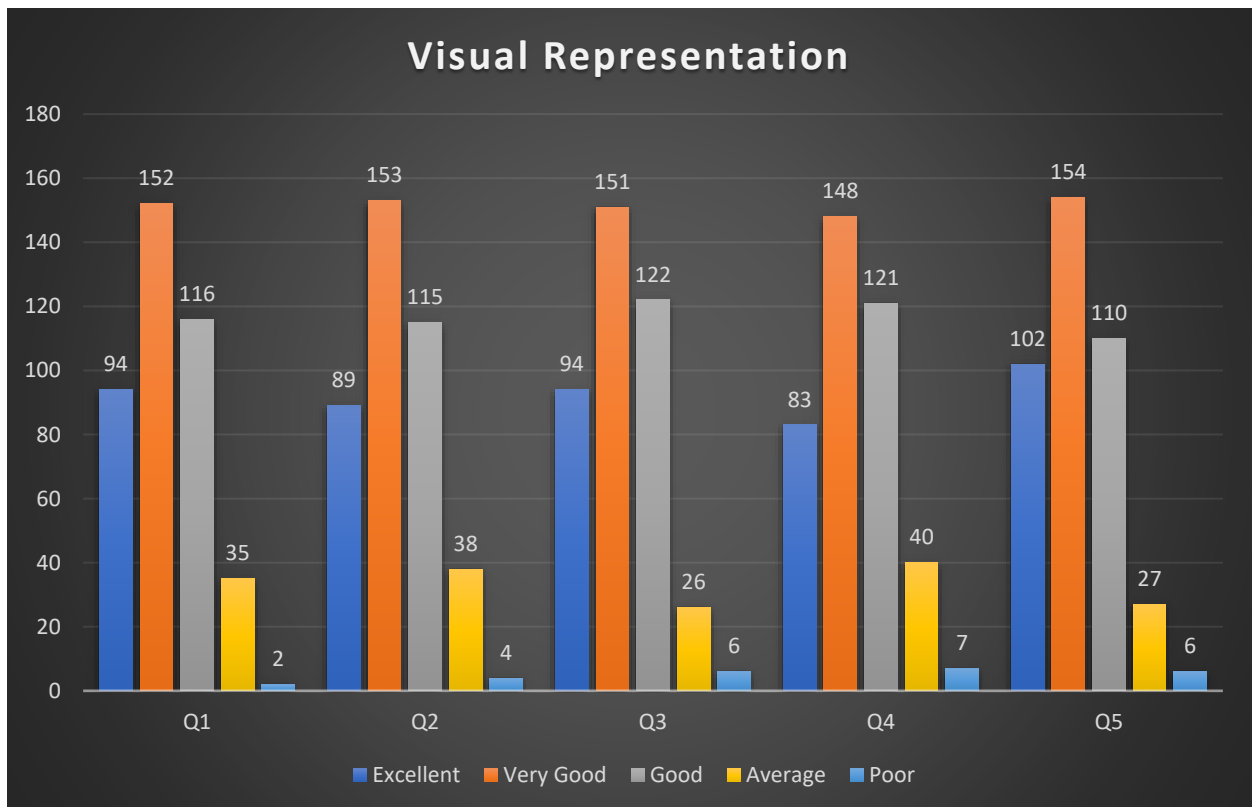
Sl. no	Questions	Responses			
		Good	Average	Fair	Poor
Q1	Office space and layout	8	3	0	0
Q2	Strength of office staff	1	6	3	1
Q3	Office furniture and fittings	9	2	0	0
Q4	Drinking water	10	0	1	0
Q5	Toilet	6	3	2	0
Q6	Canteen	5	3	2	1
Q7	Internet service	9	2	0	0
Q8	Workload distribution	3	4	2	2
Q9	Recreational activities	4	5	1	1
Q10	Committees/Cells (yearly performance)	6	4	1	0
Q11	Initiative of College administration in Promotion (for permanent posts)/ increment (for contractual posts)	3	6	2	0
Q12	Employees welfare	4	5	2	0
Q13	Cleanliness within the college compound	9	1	1	0
Q14	Initiative of the College in staff training	2	8	1	0
Q15	Security within College compound	4	4	2	1



# Analysis of Guardian's Feedback: 2022-23

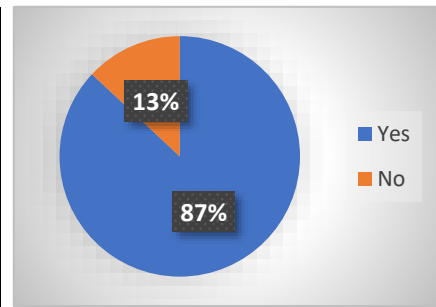
• Total respondents: 655

Sl. No	Questions	Responses				
		Excellent	Very Good	Good	Average	Poor
Q1	Do you feel facilities in the college are adequate?	94	152	116	35	2
Q2	Do you think that the college environment is conducive for the overall development of your son/daughter/ward?	89	153	115	38	4
Q3	How is the ambience of the college with respect to the facilities given to your son/daughter/wards?	94	151	122	26	6
Q4	Is your son/daughter/ward given enough exposure as far as career orientation is concerned?	83	148	121	40	7
Q5	Overall Rating of the College	102	154	110	27	6

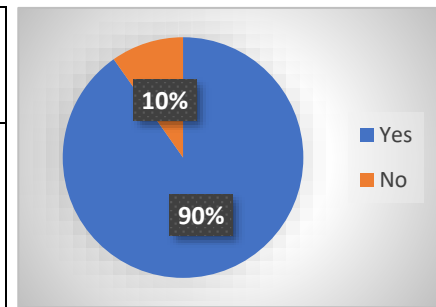




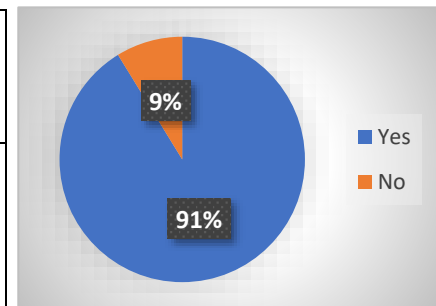
Questions	Responses	
	Yes	No
Do you find this institution better than others for your son/daughter/ward?	347	52



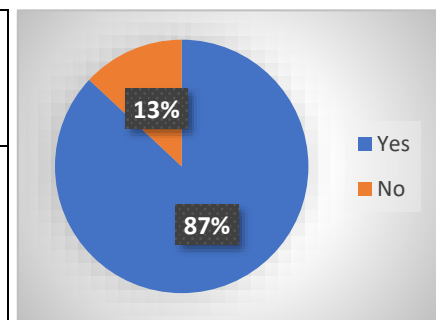
Questions	Responses	
	Yes	No
Do you feel that your son/daughter/ward is physically secured in the campus?	360	39



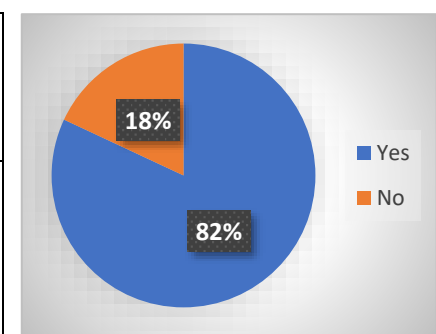
Questions	Responses	
	Yes	No
Are you satisfied for cooperation from the administrative staff?	364	35



Questions	Responses	
	Yes	No
Can you make direct communication with teaching staff?	347	52



Questions	Responses	
	Yes	No
Do you participate in the Parent-Teacher Meetings conducted by the College?	327	72

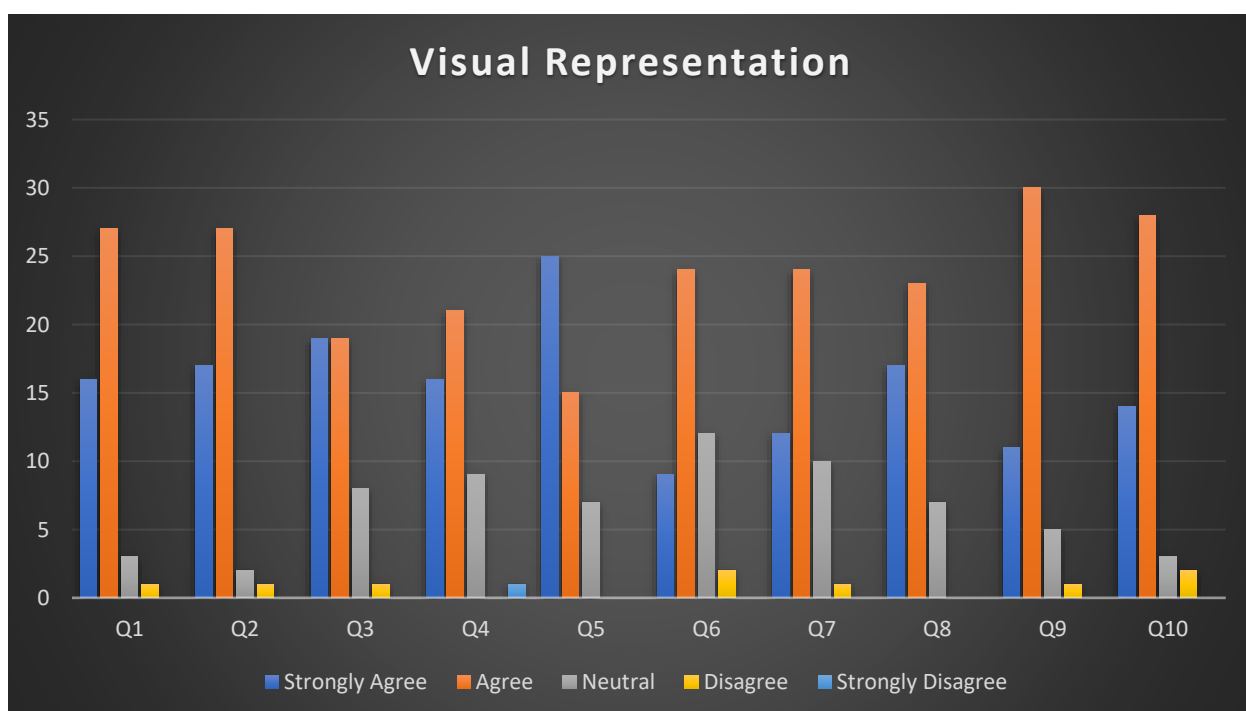


# Analysis of Feedback from Teaching Faculties: 2022-23

**Total respondents: 47**

- Opinion of Teaching Faculties on Curriculum:**

	Questions	Responses	Strongly Agree	Agree	Neutral	Disagree	Strongly Disagree
Q1	Curriculum has been updated in terms of current demand		16	27	3	1	0
Q2	Programme outcomes of the syllabi is well defined		17	27	2	1	0
Q3	Curriculum having good academic flexibility		19	19	8	1	0
Q4	The course content fulfils the need of students		16	21	9	0	1
Q5	Need of review of the syllabus		25	15	7	0	0
Q6	Curriculum enhanced employability		9	24	12	2	0
Q7	Curriculum is applicable or relevant to real-life situation		12	24	10	1	0
Q8	Creates social awareness among the students		17	23	7	0	0
Q9	Curriculum ensures student participation in learning process		11	30	5	1	0
Q10	Curriculum inculcates learning values (in terms of skills, concepts, knowledge, analytic abilities or broadening perspectives)		14	28	3	2	0



- Facilities within the Institution:**

Sl. No.	Questions	Responses	Excellent	Good	Fair	Poor
Q1	Library		18	24	5	0
Q2	Grievance redressal		10	27	8	2
Q3	Institution level support in career advancement		27	15	4	1
Q4	Governance in workload distribution		13	29	3	2
Q5	Institution level initiative in training programmes		19	17	10	1
Q6	Performance of the cells and committees		22	21	4	0
Q7	ICT Facilities		23	23	1	0
Q8	Internet		23	18	4	2
Q9	Drinking water		31	11	5	0
Q10	Toilet		20	18	7	2
Q11	Teachers' common room with adequate facilities		27	15	4	1
Q12	Canteen		6	23	13	5
Q13	Recreational		9	30	7	1
Q14	Cleanliness within college campus		19	24	3	1
Q15	Security within college campus		20	17	6	4
Q16	Employees welfare		17	23	5	2

